

MG DVRs (Integration)

Quick Installation Guide

Ver 11.10.2



Digital Video Security System
Digital Video Recorder

www.MGDVRs.com

MGDVRs

*All contents of this document may change without prior notice.

INDEX

1. Installation of DVR Driver	2
2. Program Installation	4
3. Configuration	5
3-1. Create Volume	5
3-2. System Setup	6
3-3. Camera Setup	6
3-4. Run MGDVRs Program	6

Forward

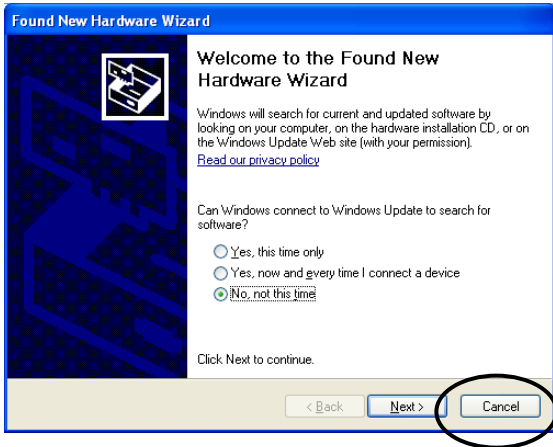
Quick Installation Guide describes the initial installation procedure. This procedure is briefly segmented into 3 steps.

1. Install driver (Software).
2. Install MGDVRs software.
3. Configure the setting program to get volume creation and to run the Main Program, which is set to 4 channel view as default.

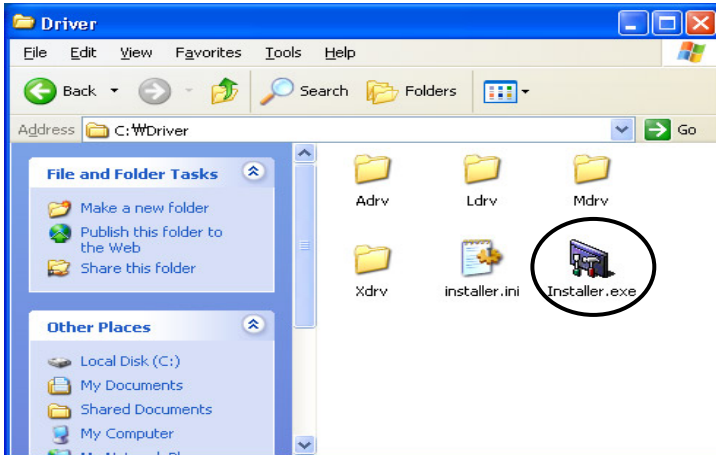
For more detailed configuration and explanation, please refer to “Installation and User’s Guide”.

E-mail: support@MGDVRs.com
www.MGDVRs.com

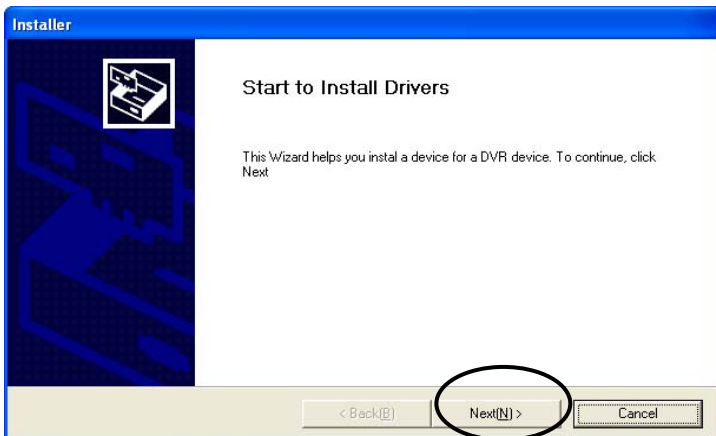
1. Installation of DVR Driver



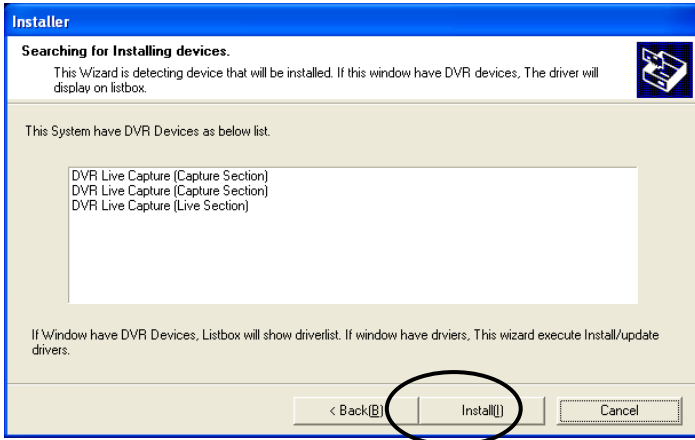
Drivers for MGDVRs CAP, MGDVRs ACAP, MGDVRs LIVCAP, MGDVRs MPG, and MGDVRs MPGAMX can be installed by “installer.exe”, which determines DVR model and installs proper Driver. When Hardware Wizard message shows up before the installation, click “Cancel” to close.



Open Driver folder in CD-Rom and run “Installer”.



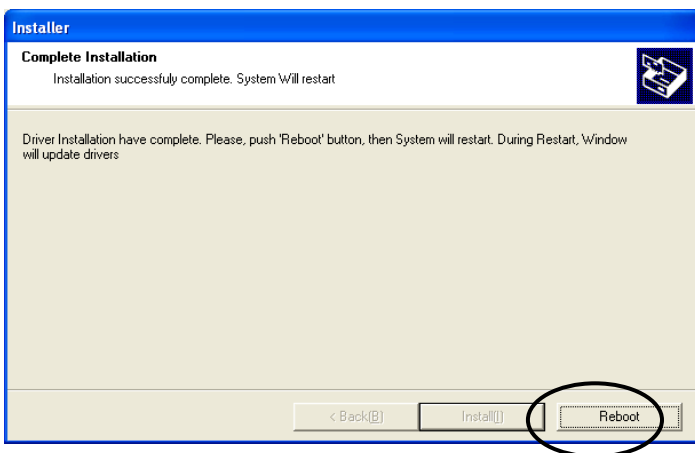
Click "Next".



Following is a chart of device list. (Depending on model, different device(s) will be displayed)

Model	Device List
CAP series	DVR Capture
LIVCAP series	DVR Live Capture
ACAP series	DVR ACapture Device
MPG series	DVR MPEG 4
MPGAMX series	Live MPEG Capture Device

Click "Install".

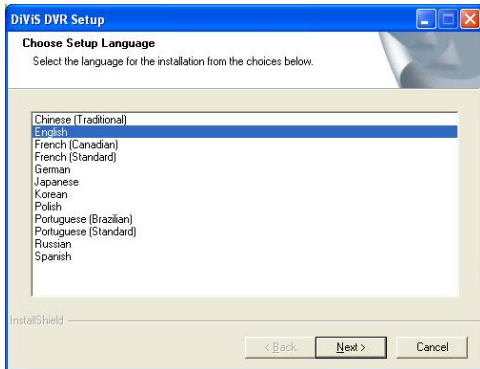


The above picture shows up when installation is completed. Click "Reboot" to restart the system. It is required to reboot the system to complete installation of drivers.

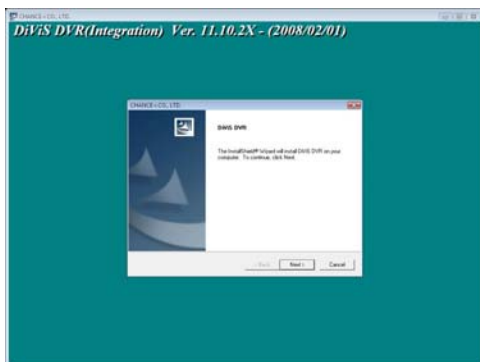
2. Program Installation

Run "Setup.exe".

(Choose the language for the software to be installed.)

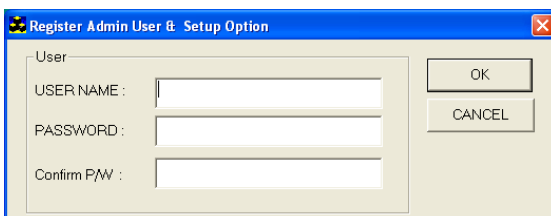


Click "Next".



Choose the proper media format (NTSC or PAL) and continue by clicking "Next."

The last letter of version indicates the type of board.
i.e.) CAP – **C**, LIVCAP – **L**, ACAP-**A**, MPG – **M**, MPGAMX – **X**



- **USER NAME:** Make Top Admin user name.
- **PASSWORD:** Make Top admin password.
- **Confirm P/W:** Confirm the password.

Note: Once the Top Admin user created, it cannot be modified from User Admin Setup. To change user name or password for Top Admin user, please refer to Appendix 1.DVR Management on Installation and User's Guide.

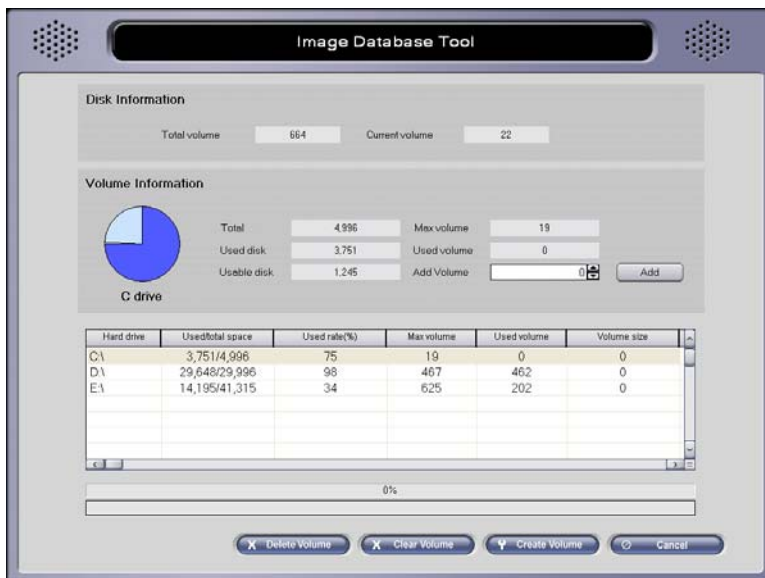
Once setup of the software has been complete, the system will need to be restarted to allow the settings to take effect.

3. Configuration

Run "DVR Setting".



3-1. Create Volume



Click "Disk tool", in order to reserve the space for DVR database

Make number of volumes desired at "Add Volume" and click "Add". This configuration needs to be done for each Hard Disk. Clicking "Create Volume" creates a MGDVRs file system on all of hard disks. (Note: Leave at least 5 to 10 volume of max space allowed).

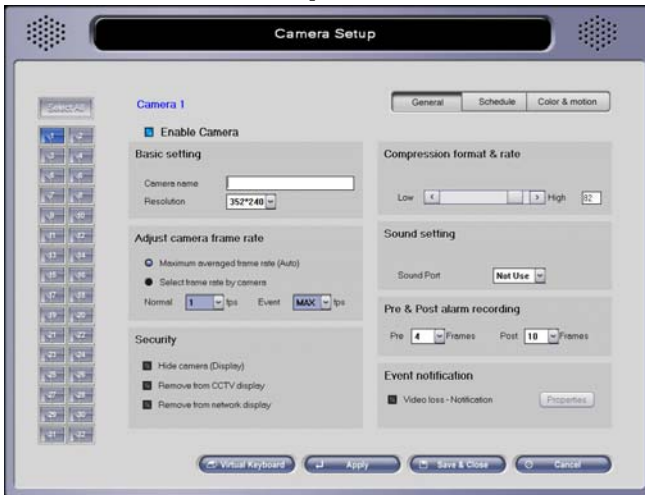
What is a Volume? Volume is the unit used by the MGDVRs DB system. 1 volume is equivalent to 65MB of physical HD space. All image data is recorded in volume units. When assigned Volumes are full, the program will continue recording by overwriting volumes that contain the oldest previously recorded data. It is recommended that important data be backed up prior to the start of the overwriting process.

3-2. System Setup



- **Initial screen:** Number of camera shots that will be displayed when system is started. Adjust the value depending on the number of camera used.
- **Auto Startup:** Enable automatic startup of DVR Main Program upon system start.

3-3. Camera Setup



- **Enable Camera:** Enable or disable camera.

3-4. Run MGDVRs Program



Click on “DVR Main” Icon, located on Windows screen. Refer to the Installation and User’s Guide for detailed configuration of MGDVRs program.