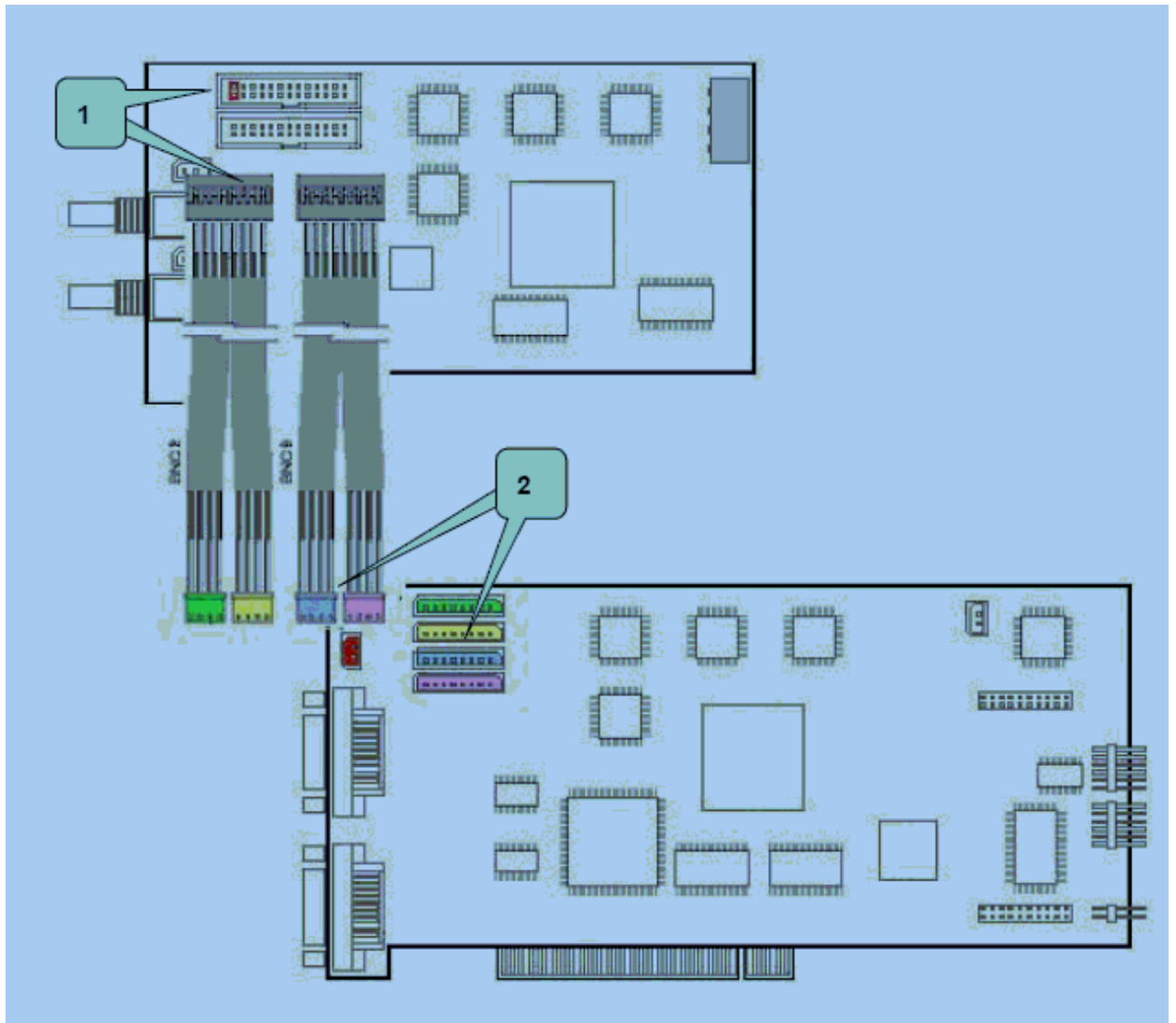


## TV-Out Matrix Board Installation

1. Turn system off and disconnect power.
2. Seat card into PCI-X slot on motherboard.
3. Connect the video cable to the video port on the tv-out matrix card as marked by 1 in the diagram below. Make sure to leave the left most pin open and the black cables facing upward.



4. Now connect the other end to the capture card as shown above in the diagram. Note how the connectors match the colors of where they are to be connected.
5. Now start system.
6. Close any applications running and click cancel if Windows tries to automatically install the drivers.

7. Open My Computer and browse to the following location:  
c:\MGDVR - 11.10.2\Utility\TV-OUT Matrix\Driver\_TVOutMatrix\
  8. Double-click the Installer.exe file to install the drivers for the card.
  9. Reboot the system if prompted.
  10. Now close any open applications and browse to:  
C:\MGDVR - 11.10.2\Utility\TV-OUT Matrix\
    11. Double-click the file named TVOutMatrix\_v11102.exe.
    12. Follow the prompts until the installation is completed.
    13. Reboot the system once completed.

## 6-1. TV-OUT Interface

Click "TV-OUT" button on the DVR Main GUI, then the TV-OUT Control window will appear as below



TV-OUT Master & Slave Board



TV-OUT Master Board only

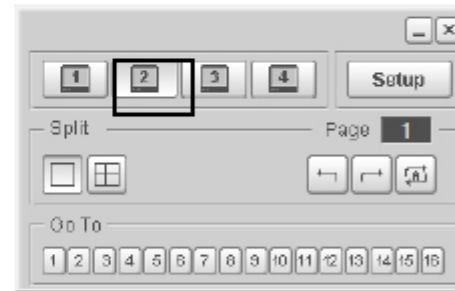
**NOTE :** There will be 2 TV-OUT ports available for a single TV-Out Master board and 4 TV-OUT buttons for two TV-Out Matrix Boards (Master & Slave).

## 6-2. TV-OUT ports

Split screens for each TV-OUT ports are shown as below.



Port 1 : 1, 4, 6, 9, 10, 16 Splits



Port 2 : 1, 4 Splits

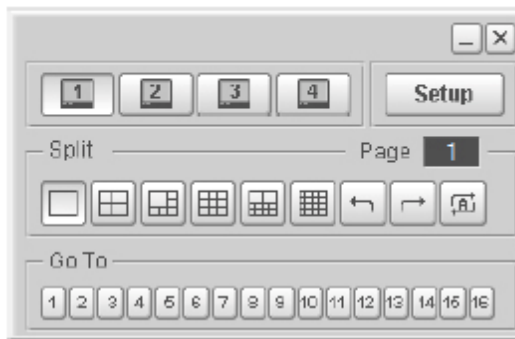


Port 3 : 1, 4, 6, 9, 10, 16 Splits



Port 4 : 1, 4 Splits

### 6-3. Menu



Main menu



TV-OUT port selection buttons.



TV-OUT Board setup button.



Split screen selection buttons.



Displays previous screen.



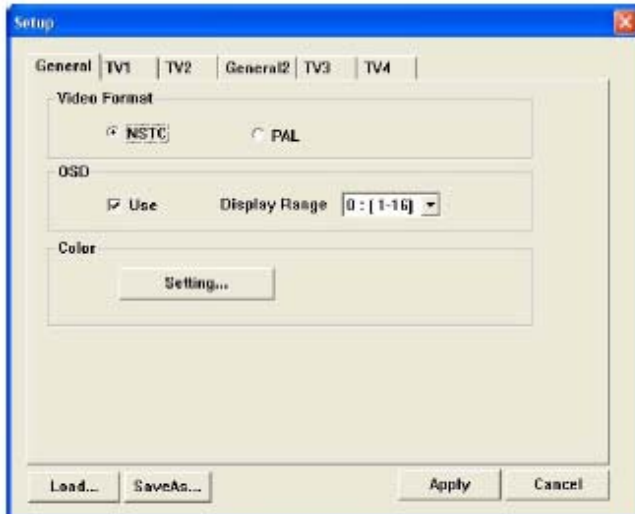
Displays next screen.



Enables auto switching.



Select one of these buttons to display the corresponding channel in a single view mode.



### 6-4-1. General

Video Format : Choose NTSC or PAL mode.

USE : Enable or disable the OSD.

Display Range : Select the OSD number (1~16 or 17~32).

Color : Click "Setting" to configure the color setting of TV-OUT Images as below.



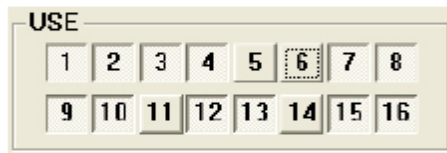
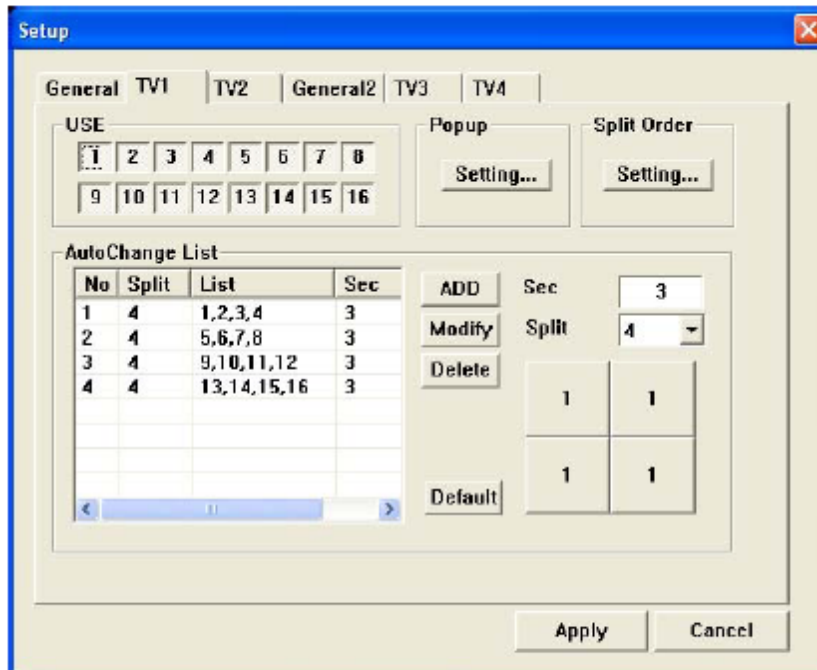
Load : Load pre-configured user settings.

Save As: Save current user settings.

Apply : Apply current settings.

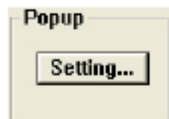
## 6-4-2. TV1, TV2, TV3, TV4

### TV-OUT port configuration

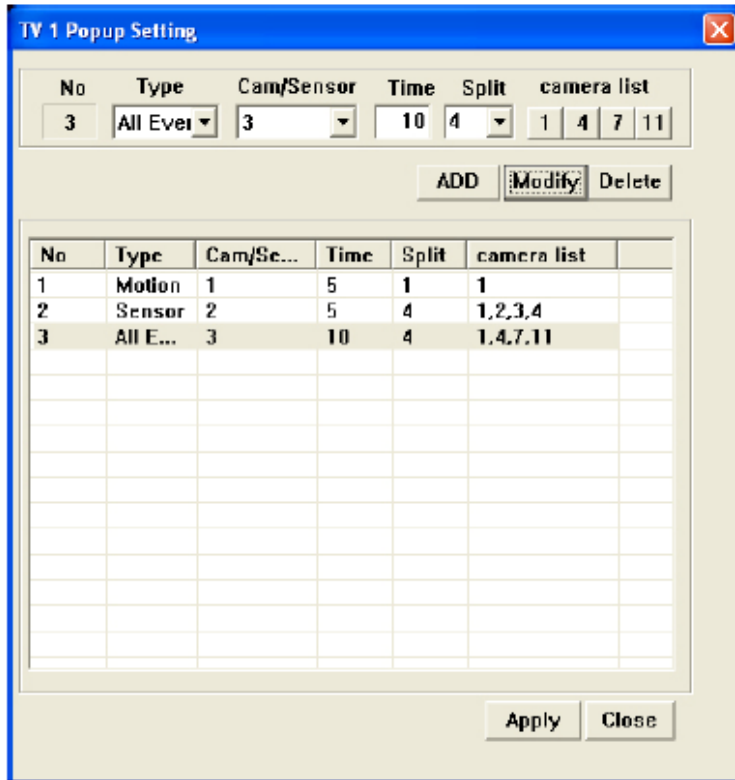


Select output channels for TV-OUT.

Inactivated channels will not be displayed on the TV-Out screen.



Click "Setting..." button to popup selected channel when an event is triggered.



No : Event order list number.

Type : Select an event type (Motion, Sensor, Sensor & Motion)

Cam/Sensor : Select a channel to popup when the specified type of event is triggered.

Time : Set the duration of TV-OUT popup when an event is triggered.

Split : Choose popup screen between 1 split and 4 split

Camera list : Select channel to popup

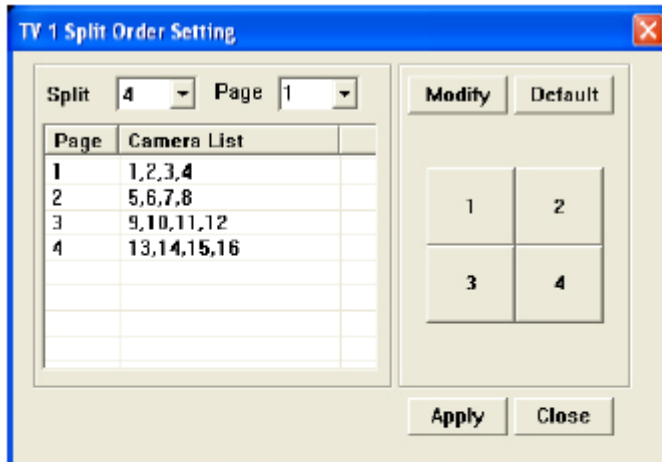
Add : Add event configuration to the list

Modify : Modify configuration of the list

Delete : Delete configuration from the list



Click 'Split' to set up split channels when selecting split screen



Split : Select split screen.

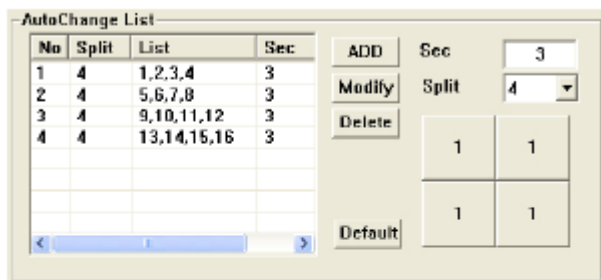
Page : Select page of the split screen.

After setting split and page number, click on split layout boxes on the right to change camera numbers.

**NOTE: Split order Setting is only applied when split screen modes are selected manually.**

**Auto Change mode will display screens according to the configuration of the Auto Change List.**

Auto Change list : Configure split screens and duration of the Auto Change mode.



Auto switching will run according to the items registered on the list.

Add : Add to the list.

Modify : Modify an existing item.

Delete : Delete an existing item.

Default : Load factory default setting.

Sec : Duration for switching.

Split : Select split screens for switching.

Click split screens on the right to select channels.